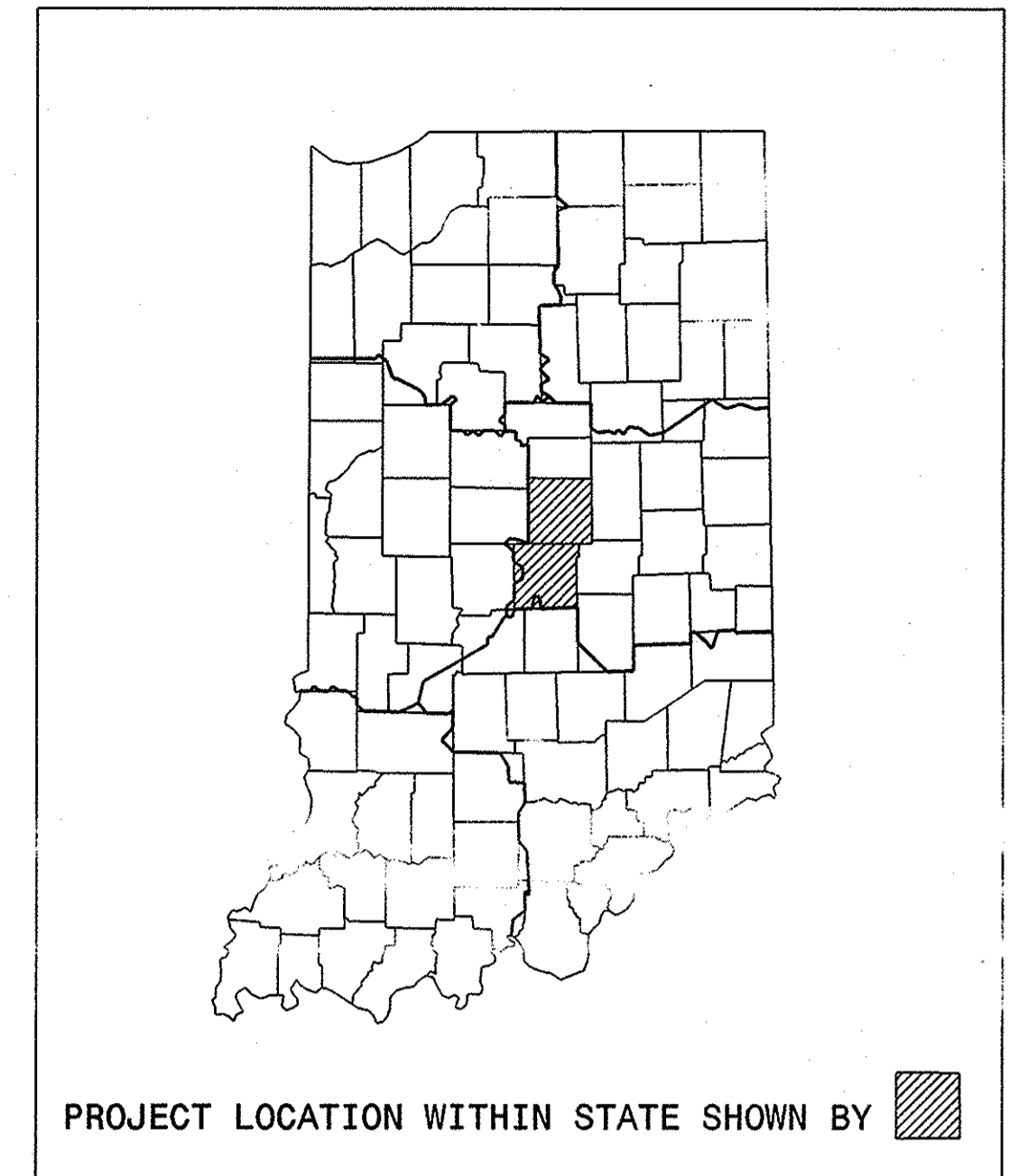


PROJECT	DESIGNATION
See Below	See Index
CONTRACT	BRIDGE FILE
B-26023	See Index

INDIANA DEPARTMENT OF TRANSPORTATION

BRIDGE PLANS FOR SPANS OVER 20 FEET

ROUTE: I-465 AT: RP 29+051 1465-132-5282B
ROUTE: 421X AT: RP 93+029 (421X)421-49-4463B
ROUTE: I-465 AT: RP 32+042 1465-129-5277C
ROUTE: I-65 AT: RP 124+042 165-124-4285 ENBL
ROUTE: I-70 AT: RP 72+107 170-73-4647 DREC
ROUTE: I-465 AT: RP 36+087 1465-125-5270JC SB
ROUTE: I-65 AT: RP 121+044 165-121-4843C



B-26023

INDEX					
STRUCTURE	TYPE	SPAN AND SKEW	UNDER	STATION	DES. NO.
1465-132-5282B	Composite Continuous Steel Beam	45'-6", 91'-0", 91'-0", 45'-6" 44°00' Right	Under West 96th Street	50 + 00 Line S-14-A	0101000
(421X)421-49-4463B	Reinforced Concrete Girder & Continuous Steel Beam	34'-0", 74'-0", 74'-0", 34'-0" No Skew	Under Hunter Road	13 + 00 Line S-1-A	0101049
1465-129-5277C	Composite Continuous Steel Beam	32'-0", 69'-6", 69'-6", 32'-0" 20°24'40" Right	Under Westfield Boulevard	50 + 00 Line S-SR-431A	0101050
165-124-4285 ENBL	Composite Continuous Steel Beam	38'-11 1/2", 69'-6", 69'-6", 38'-11 1/2" 20°00' Right	Over West 71st Street & Bushes' Run	705 + 06.11 P.R. Line E	0101087
170-73-4647 DREC	Reinforced Concrete Girder & Continuous Steel Beam	34'-0", 65'-3", 65'-3", 42'-0" 5°16'03" Left	Directional Ramp over from I-465 NB to I-70 WB over I-70	16 + 01.49 Line "N.E.L."	0101088
1465-125-5270JC SB	Continuous Composite Steel Beam	102'-6", 102'-6" 5°38'58" Left	Over I-69 / Binford Blvd.	1007+26.17 Line "A"	0101118
165-121-4843C	Reinforced Concrete Girder & Continuous Steel Beam	35'-6", 73'-0", 73'-0", 35'-6" 27°15' Left	Under West 52nd Street	50 + 00.58 Line "S-2-A"	0101209

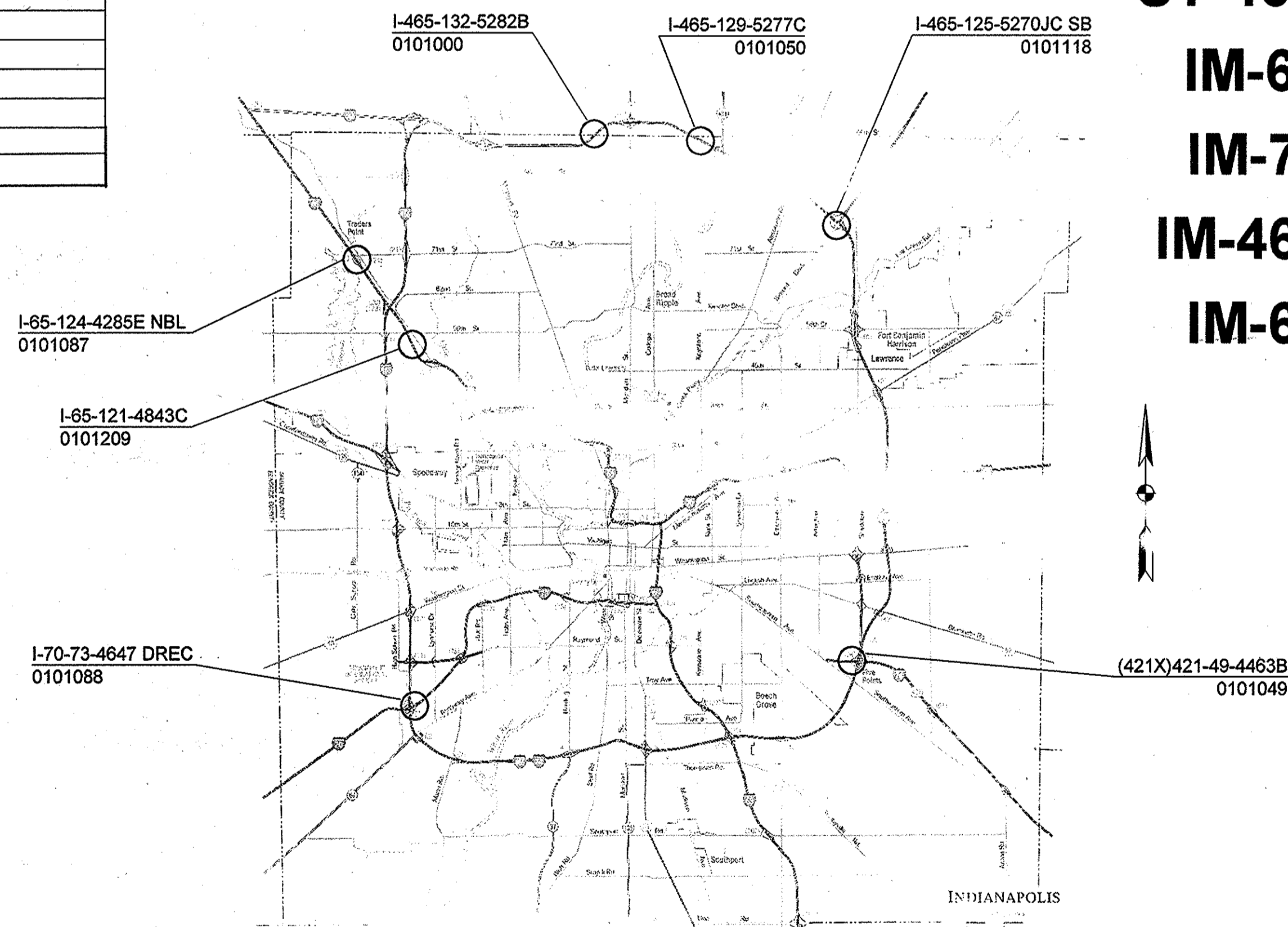
PROJECT NOS.

IM-465-4(360) CONST. 1465-132-5282B
ST-135-1(00C) CONST. (421X)421-49-4463B
ST-465-4(0JU) CONST. 1465-129-5277C
IM-65-3(00F) CONST. 165-124-4285 ENBL
IM-70-3(221) CONST. 170-73-4647 DREC
IM-465-4(360) CONST. 1465-125-5270JC SB
IM-65-3(290) CONST. 165-121-4843C

LATITUDE: 39°55'36"	LONGITUDE: 86°10'42"
LATITUDE: 39°43'54"	LONGITUDE: 86°03'00"
LATITUDE: 39°55'30"	LONGITUDE: 86°07'36"
LATITUDE: 39°52'48"	LONGITUDE: 86°17'30"
LATITUDE: 39°42'42"	LONGITUDE: 86°15'48"
LATITUDE: 39°53'42"	LONGITUDE: 86°03'12"
LATITUDE: 39°50'42"	LONGITUDE: 86°15'48"

SHEET NO.	SUBJECT
1	Index and Title Sheet
2	Structural Details for I-465-132-5282B
3	Structural Details for (421X)421-49-4463B
4	Structural Details for I-465-129-5277C
5	Structural Details for I-65-124-4285 ENBL
6	Structural Details for I-70-73-4647 DREC
7	Structural Details for I-465-125-5270JC SB
8	Structural Details for I-65-121-4843C
9	Bridge Summary
2A	Structural Details for I-465-132-5282B
2-1	Structural Details for I-465-132-5282B

BEAM STRAIGHTENING, DIAPHRAGM REPLACEMENT, AND OTHER WORK
ON BRIDGES AT SEVEN LOCATIONS WITHIN MARION COUNTY, INDIANA.



Note: Whenever IM-465-4(360) appears on these plans or contract documents it shall be interpreted as ST-465-4(V) for structure number 1465-132-5282B and ST-465-4(JW) for structure number 1465-125-5270 JC SB.

Note: Whenever IM-70-3(221) appears on these plans or contract documents it shall be interpreted as ST-70-3(K).

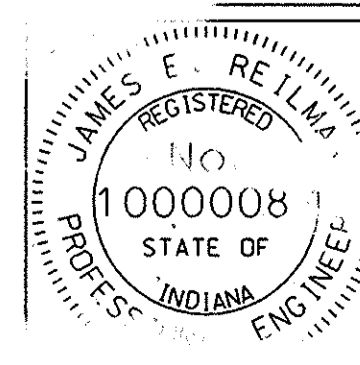
Note: Whenever IM-65-3(290) appears on these plans or contract documents it shall be interpreted as ST-65-3(I).

General Notes

- * All travel lanes above a bridge shall be completely open and free of debris at the conclusion of work each day.
- ** The applicable lane and/or shoulder of the superstructure shall be closed when heat straightening the beam(s) beneath the respective lane/shoulder.

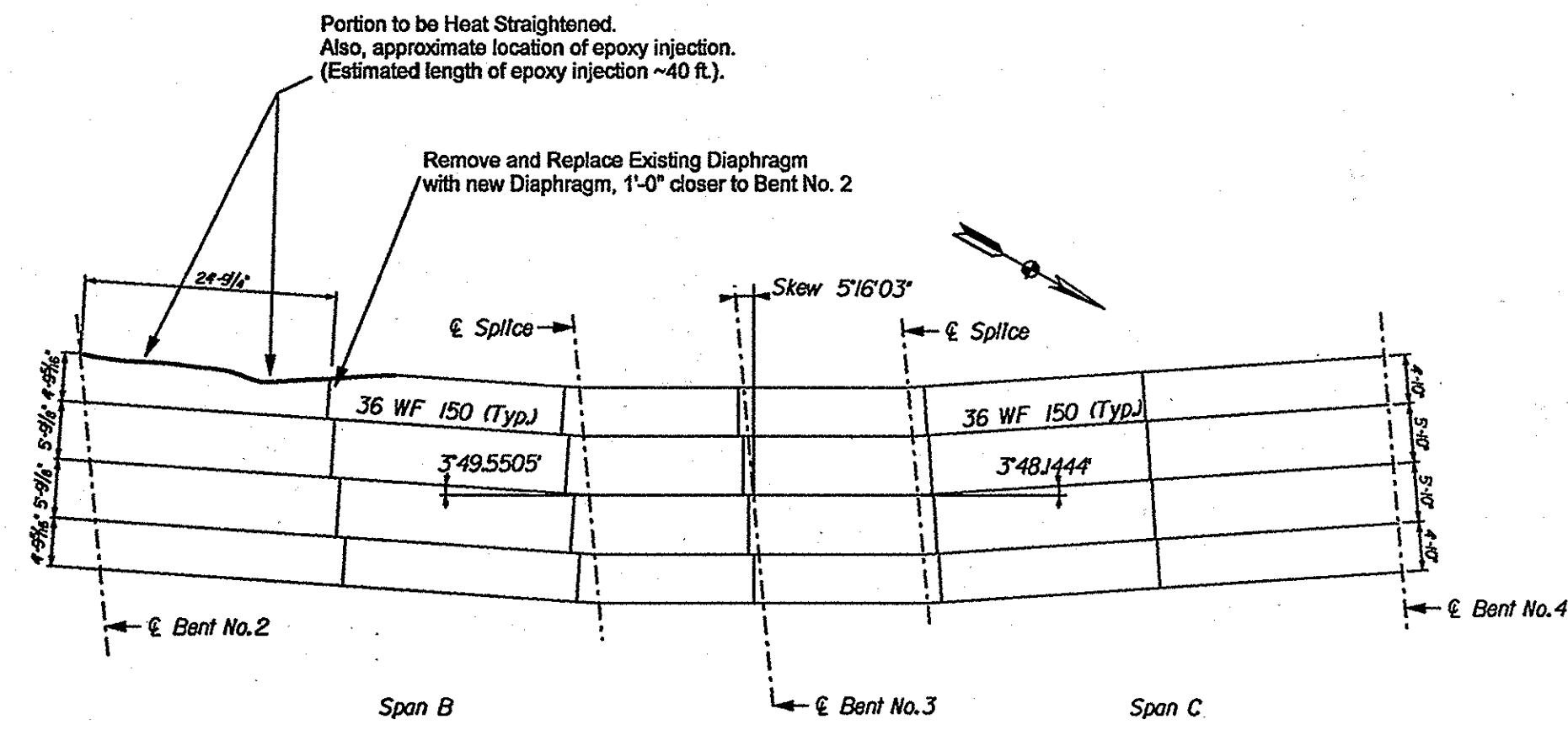
INDIANA DEPARTMENT OF TRANSPORTATION
STANDARD SPECIFICATIONS DATED 1999
TO BE USED WITH THESE PLANS

REVISIONS	
DATE	SHEET NO.
3/26/02	1, 4, DELETE 2, ADD SHEET 2A, 2-1



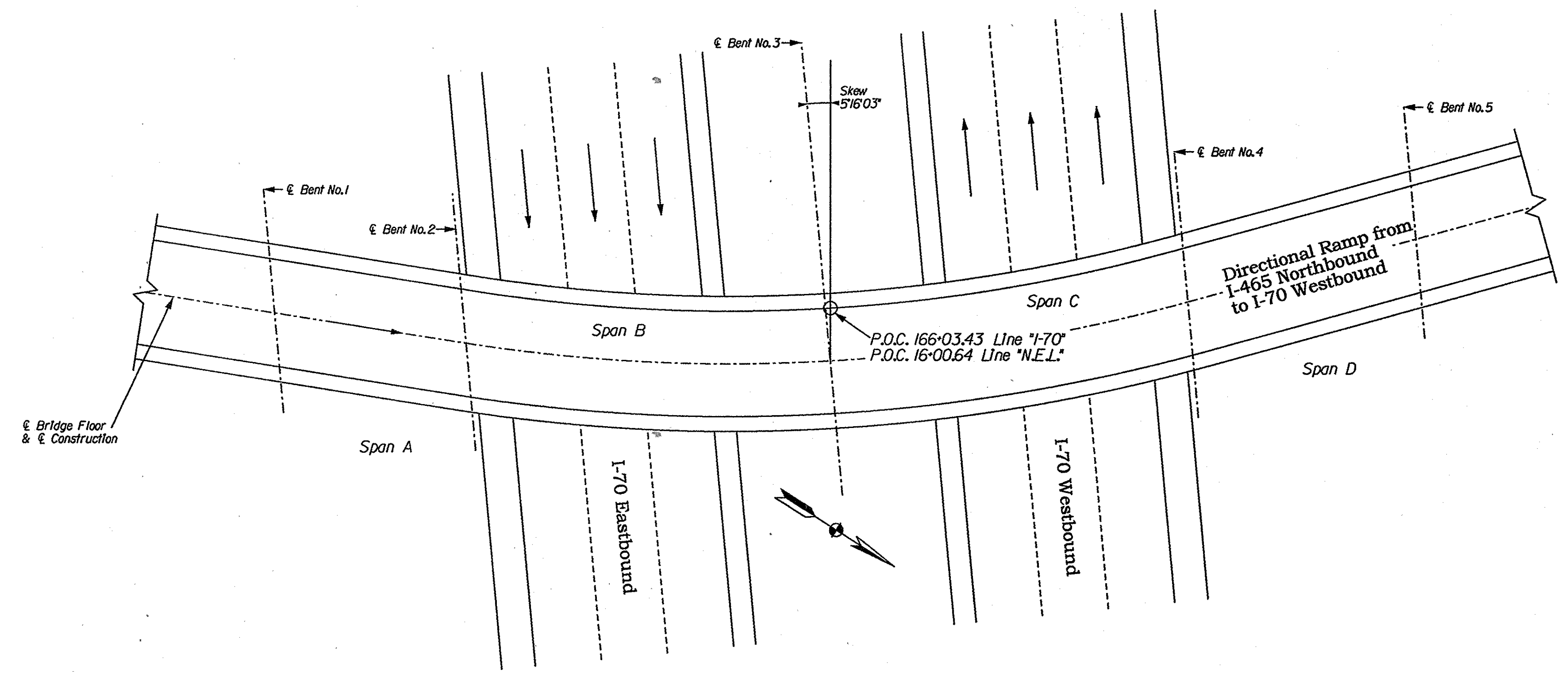
PLANS PREPARED BY: **Jim Reilman, P.E.** (317) 232-5157
 PHONE NUMBER
 DATE: 11/5/01
 DATE: 11/21/2001
 DATE:

SHEET BOOK
 SHEET
 1 of 9
 PROJECT
 B-26023
 See Above

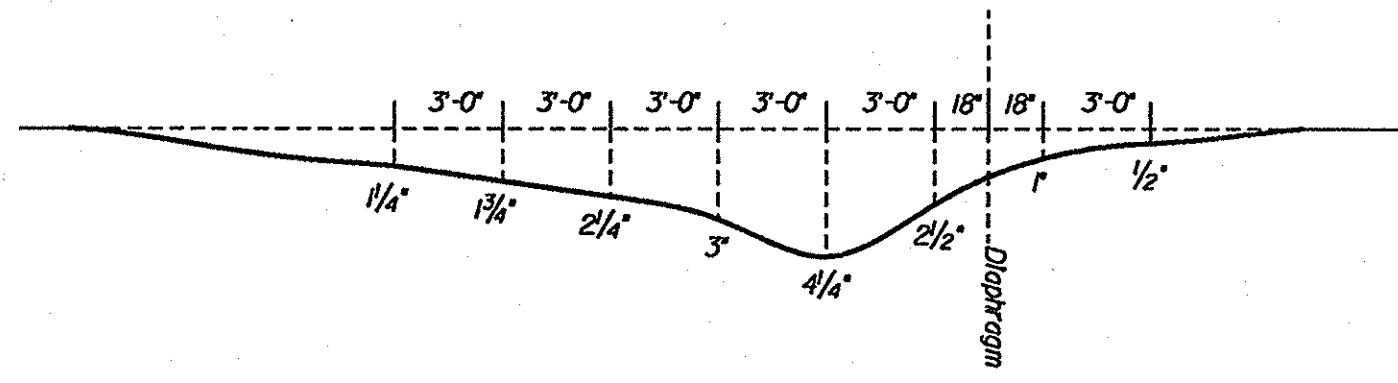


Interior Diaphragms are 18 WF 45.
End Diaphragms are 18 C 427.
The portion of the 36 WF 150 located between the Splices have flange cover plates.

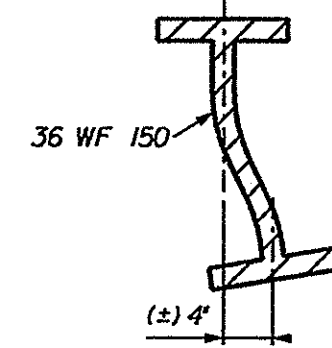
Framing Plan
Scale: 1/16" = 1'-0"



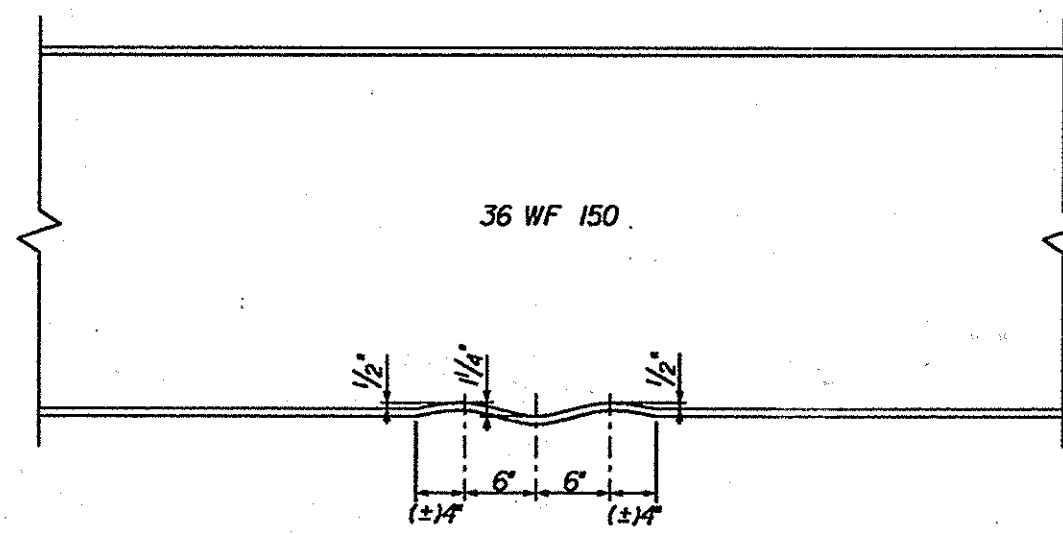
Plan
Scale: 1/16" = 1'-0"



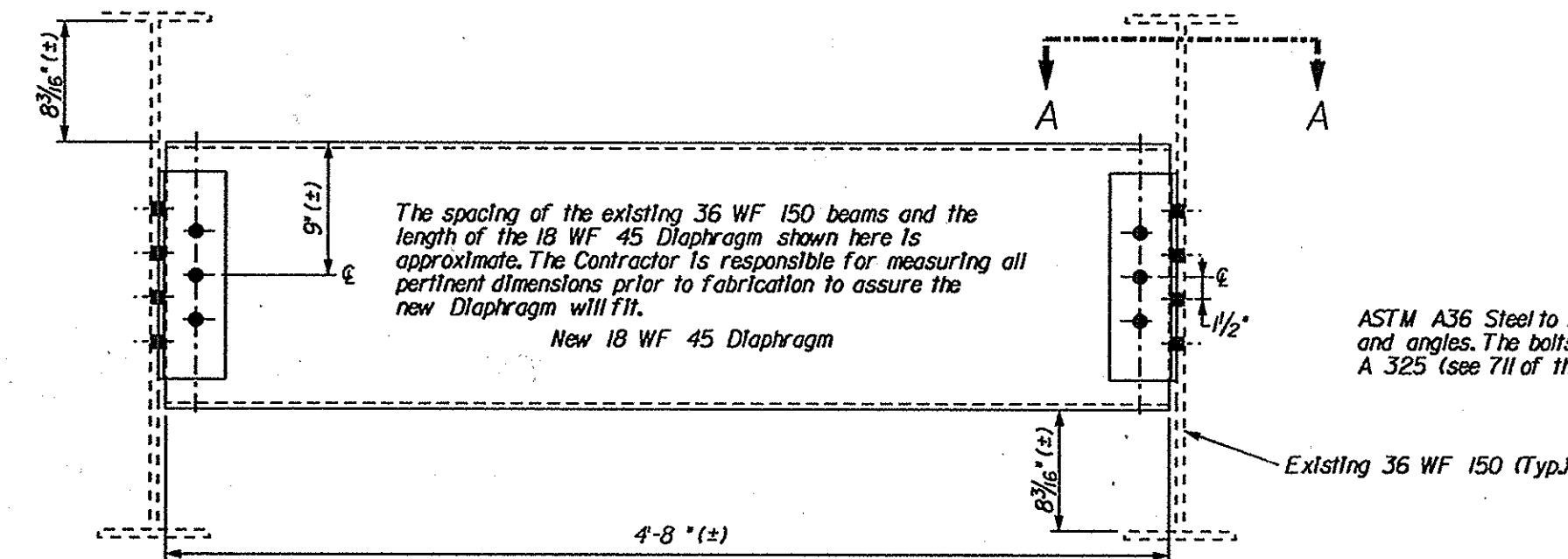
Bottom Flange Deflection
Not to Scale



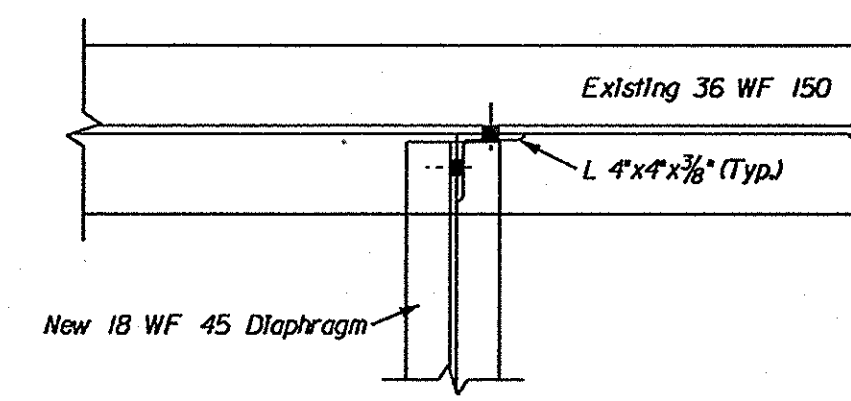
Section showing bent beam
Not to Scale



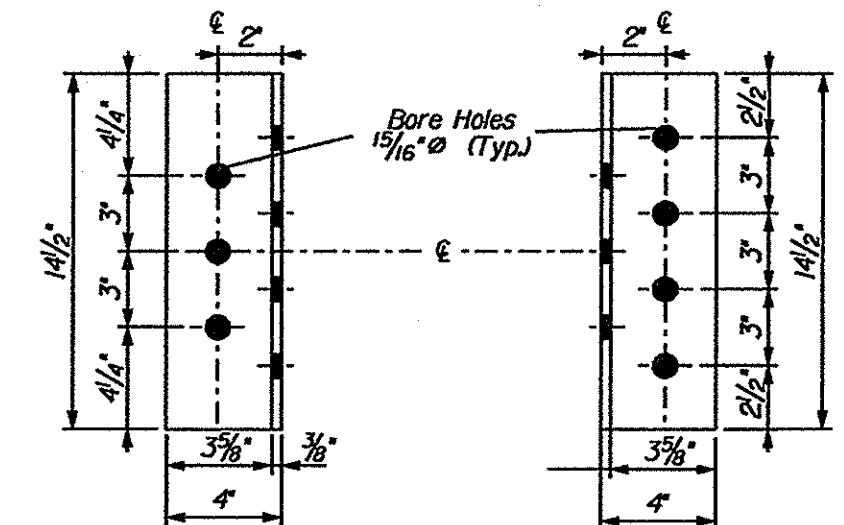
Flange at Impact Area
Not to Scale



Diaphragm Replacement Details (1 Required)
Not to Scale

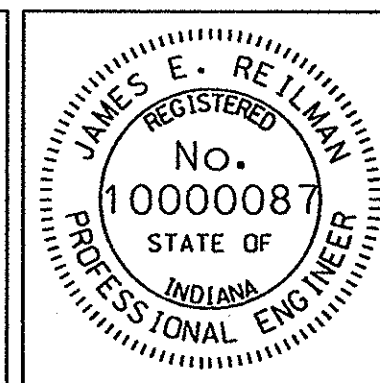


Section A-A
Not to Scale



L 4" x 4" x 3/8" Details (2 Required)
Not to Scale

- Notes:
1. Remove indicated diaphragm. The new diaphragm is to be installed using the angle brackets shown. Prior to installing the angle brackets, any bare steel is to be cleaned, primed, and painted.
 2. After the Heat Straightening Operation is complete, but prior to painting, inject epoxy into the gap between the top flange and the bottom of the bridge deck on the west coping beam.
 3. All Heat Straightened areas shall be cleaned, primed, and painted following the straightening procedure.
 4. All Structural Steel shall be ASTM A36 steel.
 5. All fasteners (bolts, nuts, etc.) shall be ASTM A325 high strength and 3/4" diameter. Rivets shall NOT be used. The cost of all miscellaneous hardware (bolts, nuts, etc.) to be included in the cost of other items.
 6. Field verify all dimensions prior to ordering Structural Steel.





RECOMMENDED FOR APPROVAL	<i>James E. Reilman</i> 11/5/01	DESIGN ENGINEER	DATE
DESIGNED: Reilman Aug. 2001	DRAWN: Reilman Sept. 2001	CHECKED: Wampler Oct. 2001	CHECKED: Wampler Oct. 2001

INDIANA
DEPARTMENT OF TRANSPORTATION

I-70-73-4647 DREC Details
(Directional Ramp from I-465 NB to I-70 WB over I-70)

SCALE	BRIDGE FILE
As Noted	170-73-4647 DREC
	DESIGNATION
	0101088
SURVEY BOOK	SHEET
None	6 of 9
CONTRACT	PROJECT
B-26023	IM-70-3(221)

STRUCTURE QUANTITIES																										
Structure	Concrete				Reinforcing Steel				Structural Steel	Quantities shown for Information Only				Heat Straighten (Location)	Field Drilled Holes	Quantities shown for Information Only					Epoxy Injection		Construction Sign, Type A	Construction Sign, Type B	Worksite Speed Limit	Flashing Arrow
	Class C	Class A	Railing		Plain		Epoxy-Coated			Steel Repair Plates						Field Welding	16 WF 26 (Diaphragm)	18 WF 45 (Diaphragm)	Angle		Epoxy Material	Crack Preparation				
	Superstr.	Substr.	Class C	ft	lbs	lbs	LS	4 1/2"x1/2"x2'-10"		21"x3/4"x2'-2 1/2"	21"x3/4"x1'-0"	9"x3/8"x1'-6"	(L 7"x4"x3/8")						(L 4"x4"x3/8")	gal						
cy	cy	cy	ft	lbs	lbs	LS	each	each	each	each	Each	Each	ft	each	each	each	each	gal	ft	each	each	each	each			
I-465-132-5282B						1	1						6	92			6		12					26		
(421X)421-49-4463B						1							9	54				3						33		
I-465-129-5277C						1				2	2		4	90	1	2			4					28		
I-65-124-4285E NBL						1							2	78					6					21		
I-70-73-4647 DREC						1							1	14			1		2	4	80			17		
I-465-125-5270JC SB						1					2		1	46*			2		4					32		
I-65-121-4843C						1							3	14	2		1		2					21		
Grand Totals						7	1	2	2	2			26	388	3	2	10th	3	30	4	80			178		
										The cost for the Repair Plates to be included in the cost of the Structural Steel. No separate payment will be made.					The cost of the Diaphragms, Plates, Angles, Field Welding, and Hardware (bolts, nuts, etc...) is to be included in the cost of other items. No separate payment will be made.											
										* Quantity includes 4 undistributed holes																

		RECOMMENDED FOR APPROVAL	 DESIGN ENGINEER	11/15/01 DATE	INDIANA DEPARTMENT OF TRANSPORTATION	BRIDGE FILE See Index DESIGNATION See Index		
		DESIGNED: Reilman Aug. 2001	DRAWN: Reilman Sept. 2001	BRIDGE SUMMARY OF QUANTITIES			SURVEY BOOK None	SHEET 9 of 9
		CHECKED: Wampler Oct. 2001	CHECKED: Wampler Oct. 2001				CONTRACT B-26023	PROJECT See Title Sheet